

DATA SHEET

O 5.16 (XL) ROTARY VANE VACUUM PUMPS

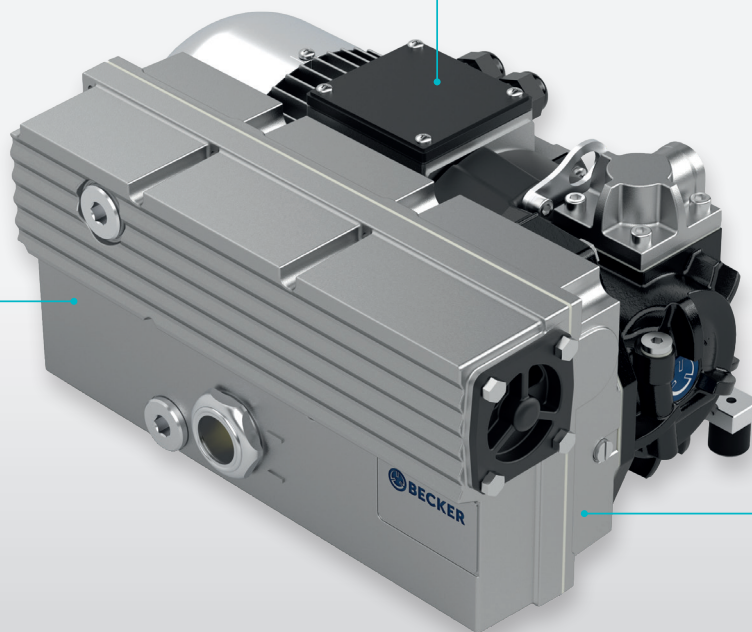
oil-lubricated
air-cooled

MAKE IT BECKER.

ROBUST
and durable

COMPACT
low overall height

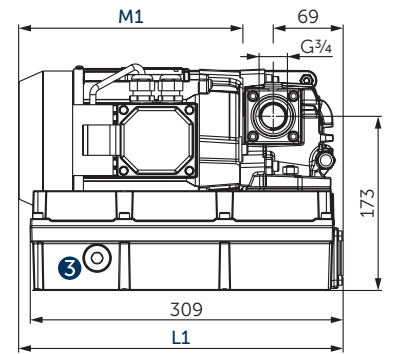
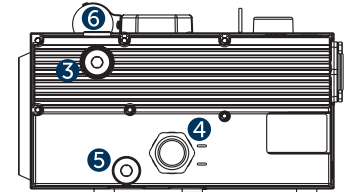
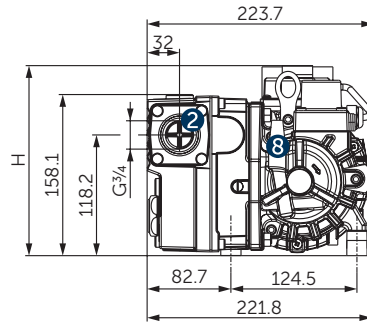
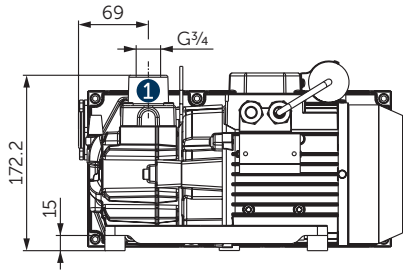
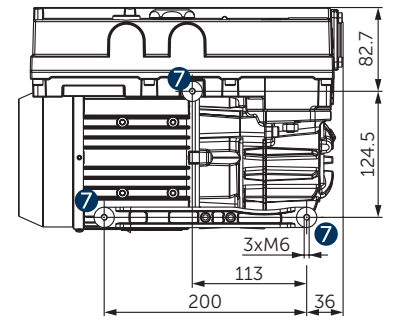
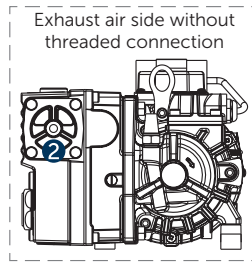
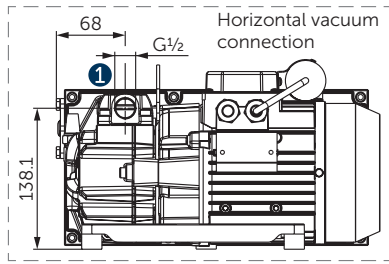
MODULAR
2 oil tank sizes



O 5.16 XL

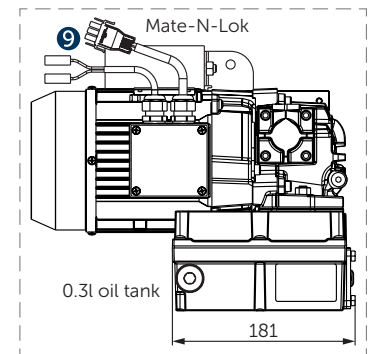


O 5.16



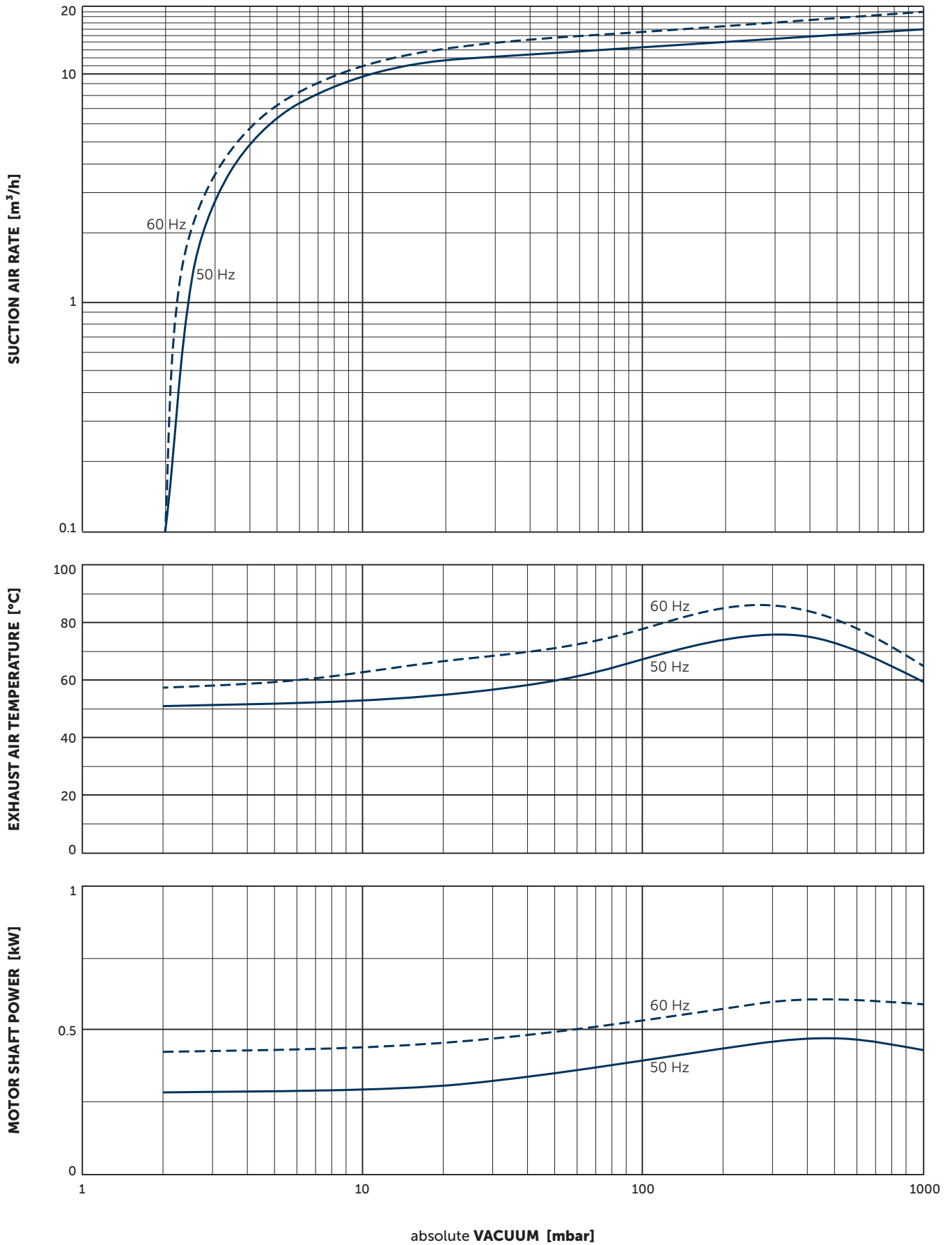
Ⓜ	H [mm]
1~	188
1~ Mate-N-Lok	158
3~	177

- 1 Vacuum connection vertical (G³/₄) or horizontal (G¹/₂)
- 2 Exhaust air side with or without threaded connection (G³/₄)
- 3 Oil filler cap
- 4 Oil sight glass
- 5 Screw plug for oil drain
- 6 Capacitor for 1~ motors
- 7 Rubber buffer position
- 8 Optional gas ballast valve
- 9 Optional Mate-N-Lok power connection for 1~ motors and Faston F 6.3 capacitor connection.
- L Blower length **L1** with motor.
L1 and **M1** are variable, see separate motor specification sheet.
 - Non-return valve and oil separator are integrated.
 - The motor illustration may vary.
 - Variants with 1~ motors (with/without Mate-N-Lok power connection) or 3~ motors are available.
 - Dimensions in mm



	Nominal capacity		Vacuum absolute		Installed motor power		Emission sound pressure level ¹⁾		Weight incl. motor	Oil (Oil tank)
	m ³ /h		mbar		kW		dB(A)			
	50 Hz	60 Hz	50 Hz	60 Hz	50 Hz	60 Hz	50 Hz	60 Hz	kg	l
O 5.16 XL	16	19	2.0	2.0	0.55	0.66	60.5	67	≈19.5	0.5
O 5.16	16	19	2.0	2.0	0.55	0.66	60.5	67	≈18.0	0.3

¹⁾ According to DIN EN ISO 11203, accuracy class of measurement: class 2, extended measurement uncertainty: 3 dB
 1 m distance, at medium load, vacuum connection piped, exhaust side open
 • Reference data (atmosphere): 1000 mbar, 20°C; Tolerance: ±10%



Suction air rate refers to the intake pressure
 Reference data (atmosphere): 1000 mbar, 20°C
 Tolerance: ±10%

ACCESSORIES

GAS BALLAST VALVE

- Version for small amounts of moisture, vacuum <3 mbar
- Version for higher amounts of moisture, vacuum <20 mbar

BECKER LUBE¹⁾

- | | | | |
|-----------------------|-------------------------|--------------------------------------|---------------------------------------|
| ▪ M 68 mineral | ▪ S 68 synthetic | ▪ SL 68 food (food packaging) | ▪ SM 68 food (food processing) |
| ▪ M 32 mineral | ▪ S 32 synthetic | ▪ SL 32 food (food packaging) | ▪ SM 32 food (food processing) |

¹⁾ See operating instructions



MAKE IT BECKER.

HOMEPAGE
[O SERIES](#)



DOWNLOAD
[MOTOR SPECS.](#)



ONLINE SHOP

